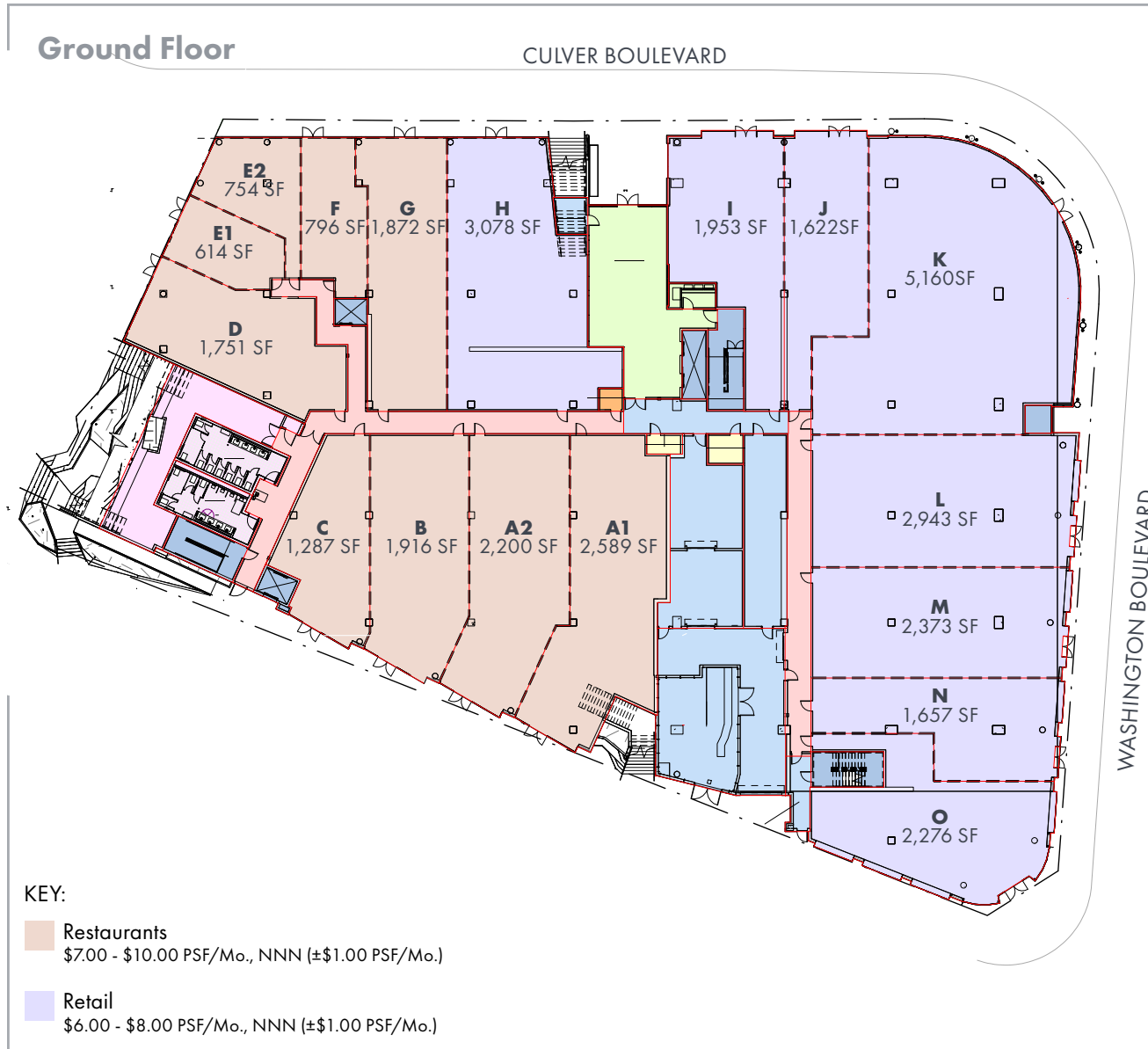


# Restaurant, Retail & Fitness

SPACES FOR LEASE • 9300 CULVER BLVD. CULVER CITY, CA 90232

## » RETAIL LEASING PLAN: GROUND FLOOR



LEE SHAPIRO • 310-887-6226  
CalBRE #00961769 | Lshapiro@kennedywilson.com

CHRISTINE DESCHAIINE • 310-887-6440  
CalBRE #00905121 | Cdeschaine@kennedywilson.com



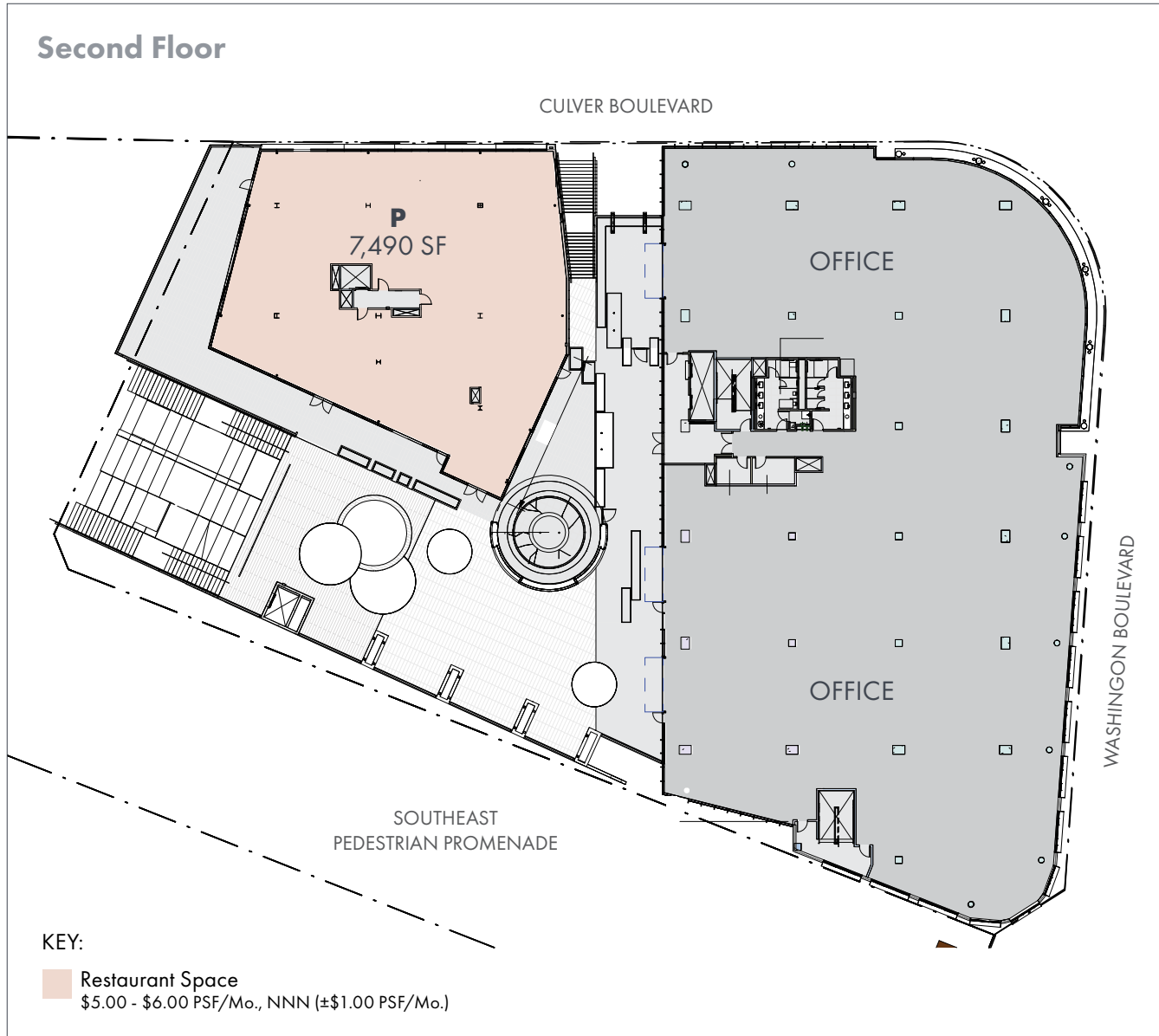
Kennedy Wilson | 151 S. El Camino Drive, Beverly Hills, CA 90212 | 310-887-6400 | www.kennedywilson.com/brokerage

Kennedy Wilson Properties, Ltd. (Responsible Broker, CalBRE #00746768) makes no warranty or representation as to the accuracy of the information contained herein. Terms of sale or lease and availability of the property are subject to change or withdrawal without notice.

# Restaurant, Retail & Fitness

SPACES FOR LEASE • 9300 CULVER BLVD. CULVER CITY, CA 90232

## » RETAIL LEASING PLAN: SECOND FLOOR



LEE SHAPIRO • 310-887-6226  
CalBRE #00961769 | Lshapiro@kennedywilson.com

CHRISTINE DESCHAIINE • 310-887-6440  
CalBRE #00905121 | Cdeschaine@kennedywilson.com

Kennedy Wilson | 151 S. El Camino Drive, Beverly Hills, CA 90212 | 310-887-6400 | [www.kennedywilson.com/brokerage](http://www.kennedywilson.com/brokerage)

Kennedy Wilson Properties, Ltd. (Responsible Broker, CalBRE #00746768) makes no warranty or representation as to the accuracy of the information contained herein. Terms of sale or lease and availability of the property are subject to change or withdrawal without notice.

KENNEDY WILSON